

RADLOK™

Utilizing Amphenol's latest R4 RADSOK® Technology, our RADLOK™ product line was designed to be compact and robust.

Power Interconnect products in today's market often require additional mounting hardware (e.g. washers, clamps, bolts, nuts, etc.) making them prone to costly labor expenses for installation and routine maintenance.

Paired with Amphenol's RADLOK™ PIN, the single finger operation lock feature allows end users to connect any power distribution/storage system in a quick and secure manner.

The RADLOK™ product line is the answer to industries where a custom, reliable, easy to install, rugged, and cost effective solution is required.

Features:

- Voltage Rating: 1000V
- Current Rating: 70A - 400A
- Tool-Free Mechanical Locking
- High cycle durability (500 mating cycles)
- RoHS compliant
- Available in Black, Red, Orange (custom colors available upon request)



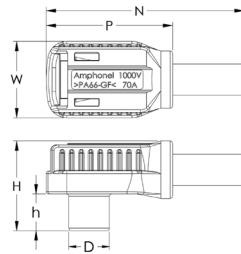
Dimensions

RADLOK™ Connector (Tubular Version)

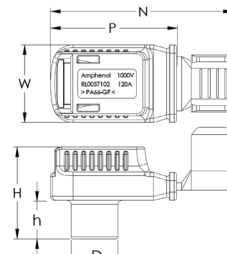
| RADLOK™ Size (mm) | W | N | H | h | D | P |
|-------------------|------|------|------|------|------|------|
| 3.6 | 15.5 | 38.0 | 18.3 | 7.3 | 8.1 | 27.0 |
| 5.7 | 18.5 | 47.7 | 22.9 | 9.4 | 11.2 | 33.0 |
| 8.0 | 21.6 | 56.0 | 27.7 | 11.8 | 14.6 | 38.8 |
| 10.0 | 26.0 | 61.0 | 35.3 | 15.9 | 17.5 | 37.0 |
| 10.3 | 26.0 | 61.0 | 35.3 | 15.9 | 17.5 | 37.0 |
| 12.0 | 28.5 | 70.5 | 35.9 | 15.0 | 20.0 | 44.5 |

RADLOK™ Connector (Stamped Version)

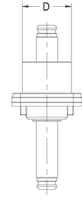
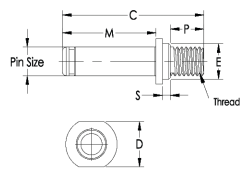
| RADLOK™ Size (mm) | W | N | H | h | D | P |
|-------------------|------|------|------|------|------|------|
| 5.7 | 18.5 | 46.0 | 21.9 | 9.2 | 11.2 | 30.0 |
| 8.0 | 21.7 | 54.4 | 27.7 | 12.5 | 14.6 | 34.3 |
| 10.0 | 25.7 | 65.0 | 33.3 | 16.1 | 17.5 | 35.7 |



Tubular Lug Version



Stamped Lug Version

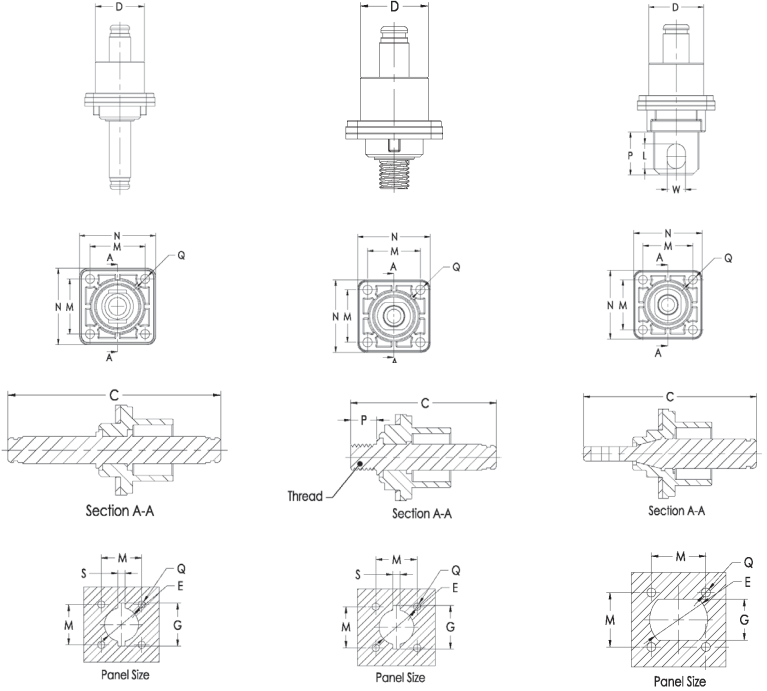


Technical Data

| | |
|-----------------------------|------------------|
| DC Voltage Rating | 1000V |
| DC Current Rating | 70A - 400A |
| Flammability Rating | UL94 V0 |
| Operating Temperature Range | -40° C to 125° C |
| Mating Cycles | 500 |



| Pin Type | Pin End | RADLOK™ Pin Size (mm) | Current (A) | RADLOK™ Dimensions (mm) | | | | | | | | | | | | | | |
|-----------|---------|-----------------------|-------------|-------------------------|--------|--------|------|------|----|------|------|----|----|------|--------|----------------|----------------|----------------|
| | | | | C | D | E | G | L | M | N | P | Q | S | W | Thread | | | |
| Pin | N/A | 3.6 | 70 | 25.2 | 5.3 | Ø 4.8 | | | | | | | | | 17.4 | 5 | 1.5 | M 3 x 0.5-6g |
| | | 5.7 | 120 | 33.9 | 7.8 | Ø 7.0 | | | | | | | | | 21.1 | 10 | 1.5 | M 6 x 1.0-6g |
| | | 8 | 200 | 40.2 | 12.8 | Ø 10.0 | | | | | | | | | 26.4 | 10 | 2.2 | M 8 x 1.25-6g |
| | | 10 | 300 | 47.4 | 12.8 | Ø 12.0 | N/A | N/A | | | | | | | 32.2 | 10 | 3.2 | M 10 x 1.5-6g |
| | | 10.3 | 350 | 47.4 | 12.8 | Ø 12.0 | | | | | | | | | 32.2 | 10 | 3.2 | M 10 x 1.5-6g |
| Feed Thru | Thread | 12 | 400 | 47.9 | 15.8 | Ø 14.5 | | | | | | | | 32.9 | 10 | 2.8 | M 12 x 1.75-6g | |
| | | 3.6 | 70 | 32.5 | 13.1 | Ø 13.7 | 19.2 | | | | | | | 16 | 24.5 | 5 | M 3 x 0.5-6g | |
| | | 5.7 | 120 | 42.1 | 16.2 | Ø 16.2 | 21.7 | | | | | | | | 18 | 27 | 10 | M 6 x 1.0-6g |
| | | 8 | 200 | 48.4 | 19.6 | Ø 18.2 | 23.7 | | | | | | | | 21 | 30 | 10 | M 8 x 1.25-6g |
| | | 10 | 300 | 62 | 23.0 | Ø 20.2 | 25.7 | N/A | | | | | | | 24 | 33 | 16 | M 10 x 1.5-6g |
| | Lug | 10.3 | 350 | 62 | 23.0 | Ø 20.2 | 25.7 | | | | | | | | 24 | 33 | 16 | M 10 x 1.5-6g |
| | | 12 | 400 | 65 | 25.5 | Ø 22.2 | 27.7 | | | | | | | | 26 | 36 | 16 | M 12 x 1.75-6g |
| | | 3.6 | 70 | 42.9 | 13.1 | Ø 19.6 | 11.6 | 6 | 16 | 24.5 | 16.5 | M3 | | | 4.2 | | | M 3 x 0.5-6g |
| | | 5.7 | 120 | 51.1 | 16.2 | Ø 21.6 | 13.6 | 8 | 18 | 27 | 18.5 | | | | 6.3 | | | M 6 x 1.0-6g |
| | | 8 | 200 | 62.4 | 19.6 | Ø 23.6 | 15.6 | 10.5 | 21 | 30 | 22 | | | | 8.5 | | | M 8 x 1.25-6g |
| | | 10 | 300 | 71.2 | 23.0 | Ø 25.6 | 17.6 | 12.5 | 24 | 33 | 24 | M4 | | | 10.5 | | | M 10 x 1.5-6g |
| | | 10.3 | 350 | 71.2 | 23.0 | Ø 25.6 | 17.6 | 12.5 | 24 | 33 | 24 | | | | 10.5 | | | M 10 x 1.5-6g |
| Pin | 12 | 400 | 76 | 25.5 | Ø 27.6 | 19.6 | 14.5 | 26 | 36 | 26 | | | | 13 | | | M 12 x 1.75-6g | |
| | 3.6 | 70 | 42.8 | 13.1 | Ø 13.7 | 19.2 | | | | | | | | 16 | 24.5 | | M 3 x 0.5-6g | |
| | 5.7 | 120 | 51.2 | 16.2 | Ø 16.2 | 21.7 | | | | | | | | 18 | 27 | | M 6 x 1.0-6g | |
| | 8 | 200 | 64 | 19.6 | Ø 18.2 | 23.7 | | | | | | | | 21 | 30 | | M 8 x 1.25-6g | |
| | 10 | 300 | 78.5 | 23.0 | Ø 20.2 | 25.7 | | | | | | | | 24 | 33 | | M 10 x 1.5-6g | |
| 10.3 | 350 | 78.5 | 23.0 | Ø 20.2 | 25.7 | | | | | | | | 24 | 33 | | M 10 x 1.5-6g | | |
| 12 | 400 | 80.2 | 25.5 | Ø 22.2 | 27.7 | | | | | | | | 26 | 36 | | M 12 x 1.75-6g | | |



How to Order

| Product Type | Termination Type | RADSOK® ** | (mm) | Lug Type | Cable Size (mm²) ** | Current (A) | Length (mm) | Conn. Color | Stud Size | Pin End | Plating Type | Modification |
|--------------|------------------|----------------------|------|-----------|---------------------|-------------|-------------|-------------|------------|-----------|--------------|--------------|
| RL | CABLE ASSEMBLY | 1 RDLK + RDLK | 036 | 3.6 | N/A | 10 | 70 | * ORANGE | N/A | N/A | N/A | N/A |
| | | 2 RDLK + POW LUG | 057 | 5.7 | | 16/25 | 90/120 | | L + LENGTH | | | |
| | | 3 RDLK + POW LUG 45° | 080 | 8.0 | | 35/50 | 150/200 | | | | | |
| | | 4 RDLK + LUG TRMNL | 100 | 10.0 | | 50/70/95 | 200/250/300 | | BK BLACK | | | |
| | | 5 RDLK + RING TRMNL | 103 | 10.3 | | 95 | 350 | | | | | |
| | | 6 RDLK + BLUNT CUT | 120 | 12.0 | | 120 | 400 | | | | | |
| | | 7 RDLK + STRIPPED | | | | | | | RE RED | | | |
| CONNECTOR | 0 RDLK CONNECTOR | | | 1 TUBULAR | | | | | | | | |
| | | 2 STAMPED | | | | | | | | | | |
| PIN | 9 RDLK PIN | | | | | | N/A | | | 10 THREAD | 1 Silver | * / F1 |
| | | | | | | | | | | 20 LUG | 2 Tin | * / F1 |
| | | | | | | | | | | | 30 PIN-PIN | 3 Nickel |

NOTE:

- For all applications, care must be taken to ensure that RADLOK™ connection is protected from the transmittal of any mechanical loads induced by, but not limited to, vibration, bending, the mass of the cable, or shock loading. The cable/wiring should be secured as close to the RADLOK™ as possible. Custom mounting options and recommendations are available upon request.
- "Stud Size", M for Metric unit & E for Imperial unit. For example, M8 means Stud Size is 8mm; E3/4 means the Stud Size is 3/4 inch.

Examples:

- 10.0mm Orange RADLOK™ connector to 3/8" stud hole Lug Terminal, 10ft long 70mm² cable assembly would have part number, **RL4-100-70L3048E3/8**
- 8.0mm Black RADLOK™ connector with Tubular 50mm² cable crimp would have part number, **RL0-080-1-50BK**
- Silver plated 12.0mm RADLOK™ Feed Thru Pin would have part number, **RL9-120-101F1**

* (Leave blank for default connector color or default pin without modification)
 ** (10mm² cable is recommended for 3.6mm RADSOK®; 16mm²/25mm² cable is recommended for 5.7mm RADSOK®, ...etc)

For further information on your individual application requirements, contact: Amphenol Corporation

North America:
 Amphenol Industrial Operations
 180 N. Freeport Drive, Plant 4
 Nogales, AZ 85621
 Tel: (520) 285-5130
 Fax: (520) 285-5134

Europe:
 Amphenol Industrial Operations Europe
 Via Barbaiana 5
 1-20020 Lainate (MI) Italy
 Tel: +39 02 93254.204
 Fax: +39 02 93254.444

Middle East:
 Amphenol Middle East Enterprises FZE
 Office C-37 PO Box 21107
 Ajman Free Zone, UAE
 Tel: +9 716-7422494
 Fax: +9 716-7422941

Asia:
 Amphenol Technology Shenzhen Ltd
 Block 5 Fuan 2nd Industrial Park
 Dayang Rd, Fuyong Baoan
 Baoan, Shenzhen, China 518103
 Tel: +86 755 2881 8389
 Fax: +86 755 2991 8310
 Email: enquiry@amphenol-aio.com

Email: tech@amphenol-aio.com

Email: info@amphenol-aio.com

Email: jhussain@amphenol-industrial.com

Mouser Electronics

Authorized Distributor

Click to View Pricing, Inventory, Delivery & Lifecycle Information:

[Amphenol:](#)

[RL5-100-95-L610-E3/8](#)